

Dear Who it may Concern

My name is Jessica Elizabeth Banks and my life work was collecting different types of pictures and information from around my area where I live, that one day it can be used to tell the future about the past. As I am saying here, waiting for the angel death to take my hand, make me a promise that you will continue my life work.

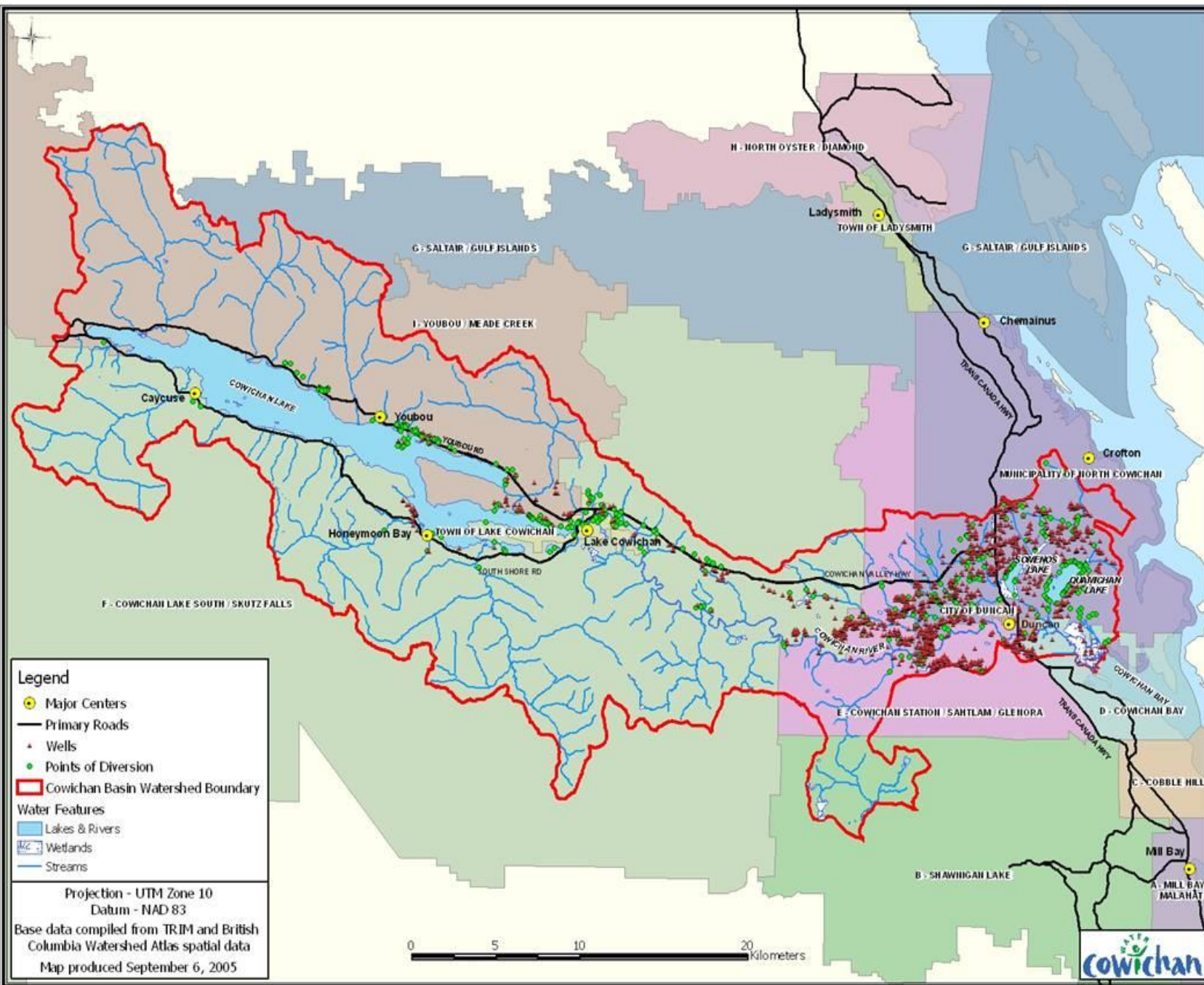
Many Thanks

Jessica

1920-2017

We live in the Cowichan Watershed, the map below shows the area. 29,000 years ago after the ice age, the Cowichan lake. Domes lake and Quamichan lake was created. After It warmed up the plants return. The Aboriginal people arrived, then late on the Euro-Canadians arrived and our water shed developed over time into what it is today. The unique part is that we don't own our water shed and it is owned by logging companies.

Map of the Cowichan Water Shed



The Cowichan Lake Weir

- *Controls the output and input of the water*

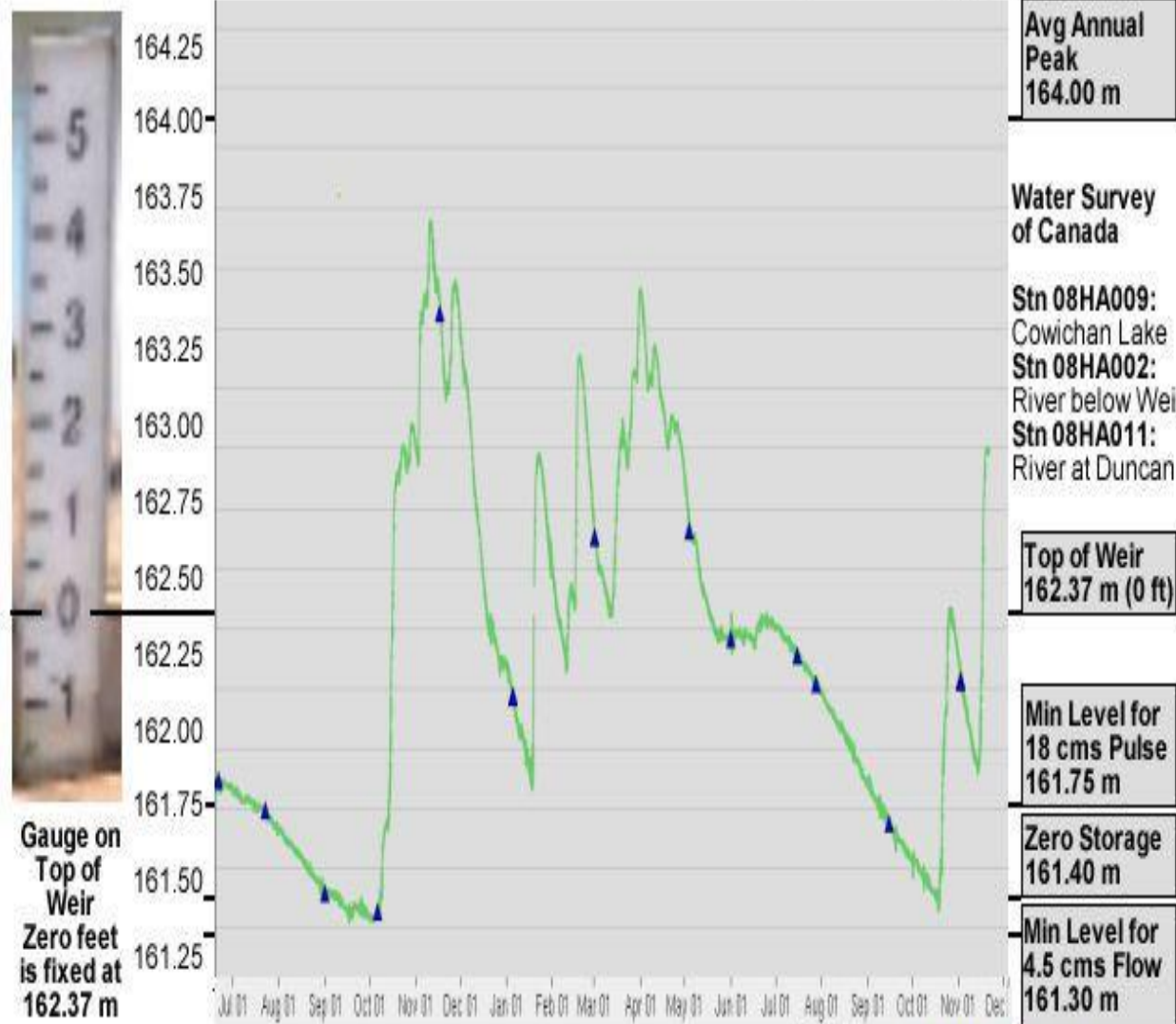
"Its job is to balance two objectives:

1. to maintain a flow rate, or discharge rate, in the river above 7 cubic metres per second (m³/s), and

2. to maintain sufficient water in the lake as long as possible." - Cowichan Water Board



Cowichan Lake Level



Avg Annual Peak
164.00 m

Water Survey
of Canada

Stn 08HA009:
Cowichan Lake
Stn 08HA002:
River below Weir
Stn 08HA011:
River at Duncan

Top of Weir
162.37 m (0 ft)

Min Level for
18 cms Pulse
161.75 m

Zero Storage
161.40 m

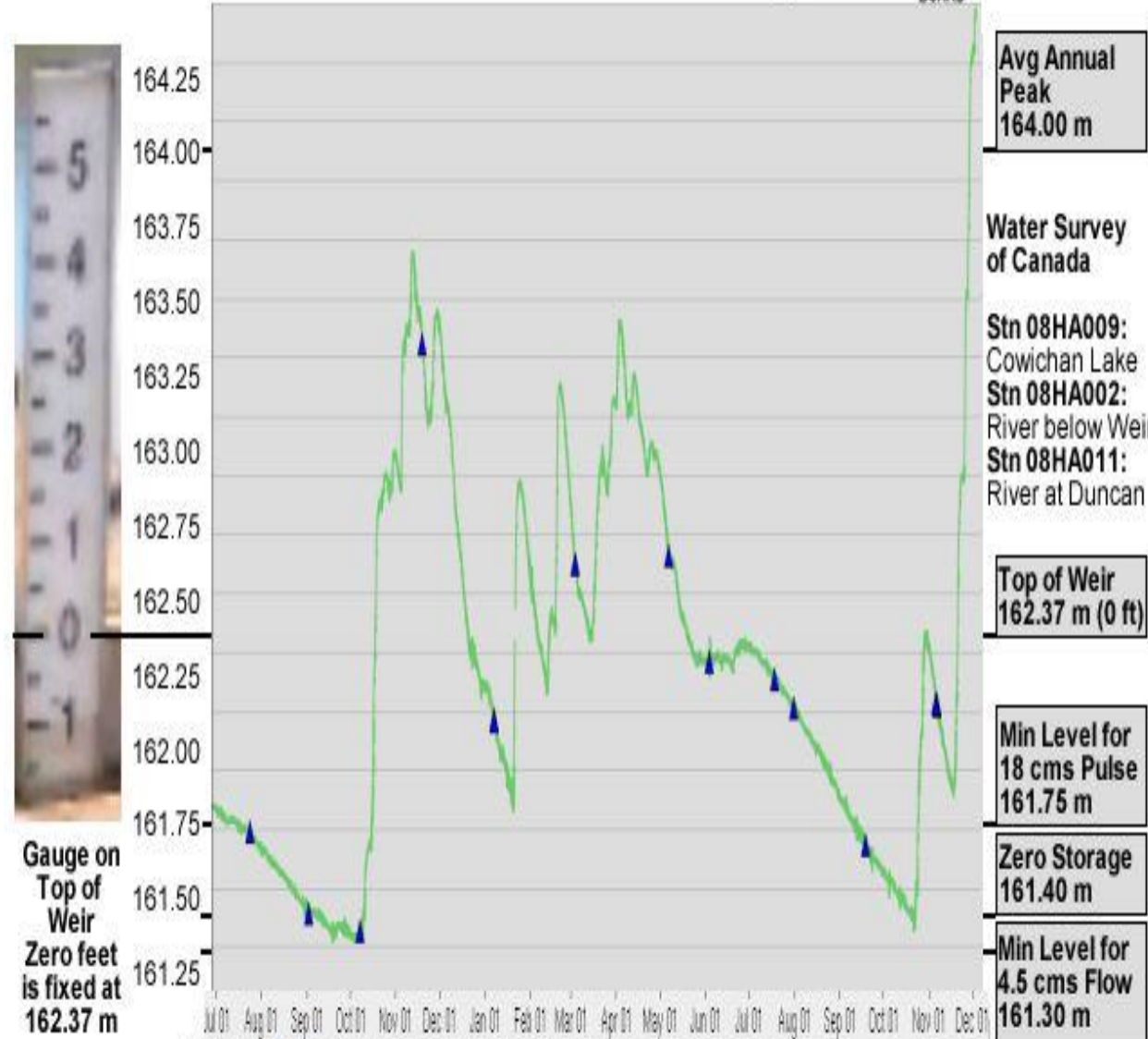
Min Level for
4.5 cms Flow
161.30 m

Gauge on
Top of
Weir
Zero feet
is fixed at
162.37 m

MAX LEVEL	MIN LEVEL
2016-17 10Nov2016 163.72 m	2016 01Oct2016 161.38 m
2015-16 11Dec2015 164.32 m	2015 28Aug2015 161.46 m
2014-15 12Dec2014 164.06 m	2014 10Oct2014 161.54 m

DATE: 18 Nov 2017
LAKE LEVEL: 162.94 m
FLOW WEIR: 92.1 cms
FLOW DUNCAN: 111.0 cms

Cowichan Lake Level



Avg Annual Peak
164.00 m

Water Survey
of Canada

Stn 08HA009:
Cowichan Lake
Stn 08HA002:
River below Weir
Stn 08HA011:
River at Duncan

Top of Weir
162.37 m (0 ft)

Min Level for
18 cms Pulse
161.75 m

Zero Storage
161.40 m

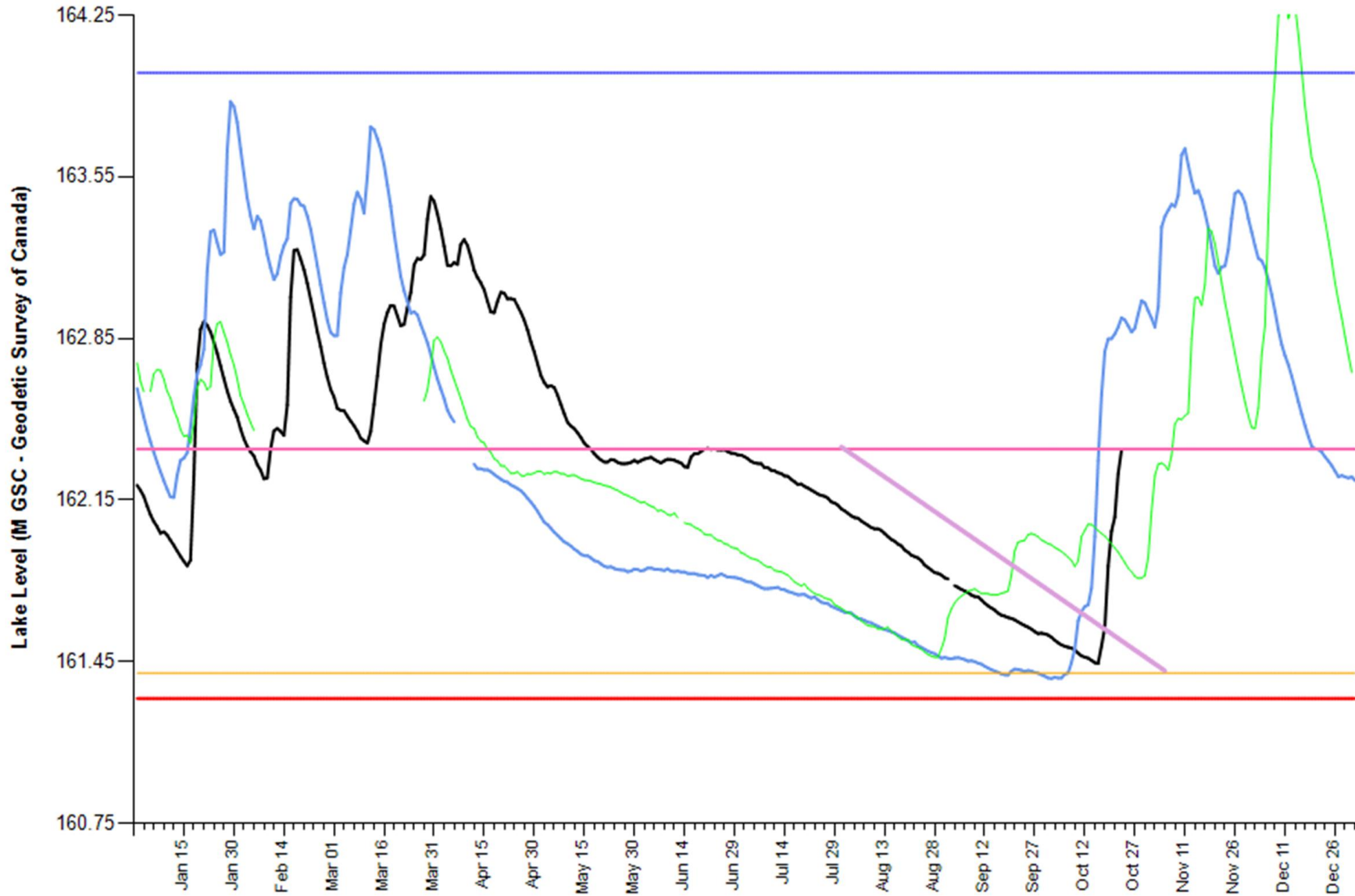
Min Level for
4.5 cms Flow
161.30 m

Gauge on
Top of
Weir
Zero feet
is fixed at
162.37 m

MAX LEVEL	MIN LEVEL
2016-17 10Nov2016 163.72 m	2017 16Oct2017 161.44 m
2015-16 11Dec2015 164.32 m	2016 01Oct2016 161.38 m
2014-15 12Dec2014 164.06 m	2015 28Aug2015 161.46 m

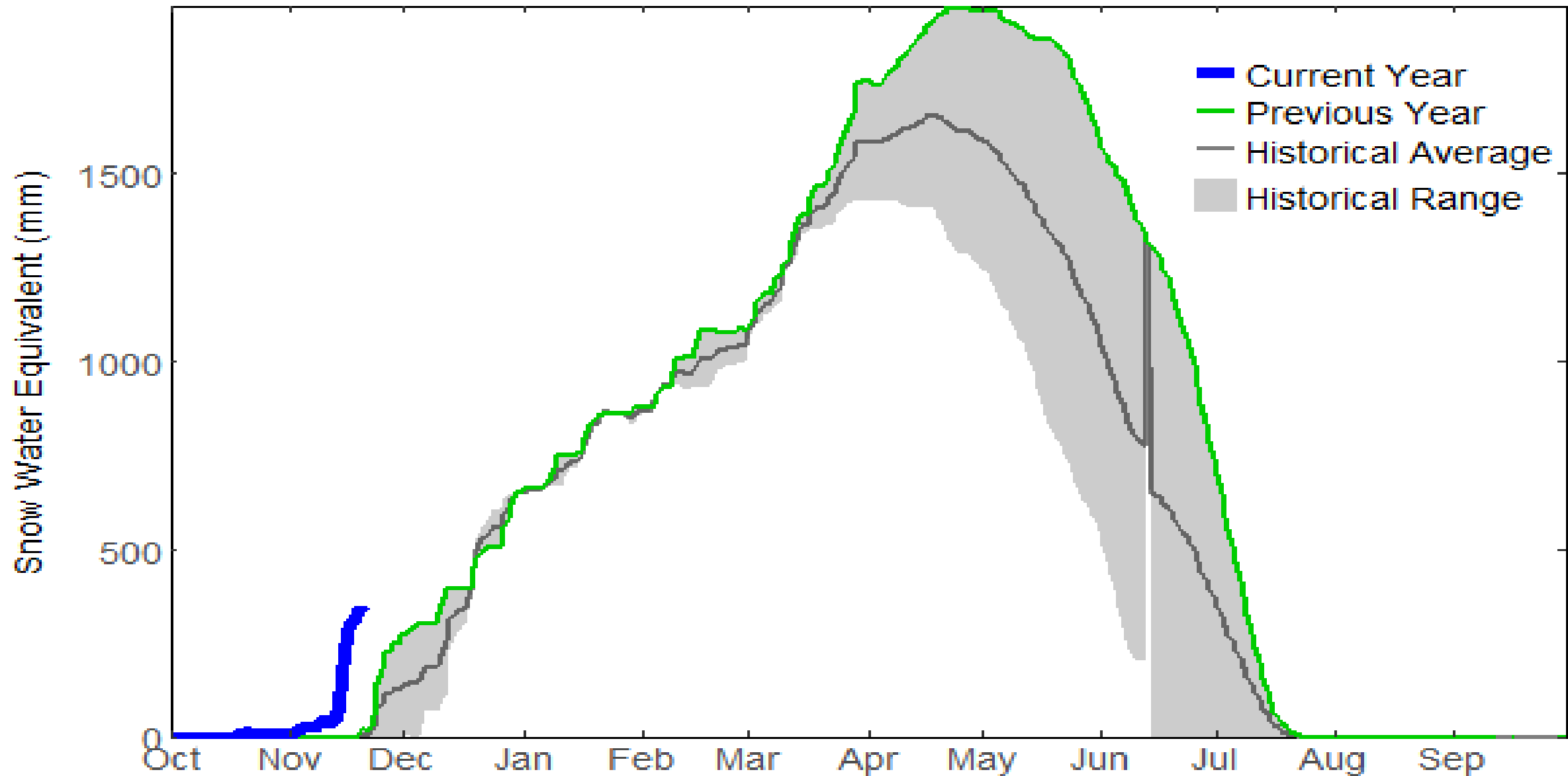
DATE: 26 Nov 2017
LAKE LEVEL: 164.44 m
FLOW @ WEIR: 224.7 cms
FLOW @ DUNCAN: 315.9 cms

2017 Cowichan Lake Level - 2017 (Black) & 2016 (Blue) & 2015 (Green)



The change of the water levels over the past couple of years.

— 2017 Lake Level M GSC — 2015 Lake Level M GSC — CREST of Weir — 7.08 CMS Zero Storage — 4.5 CMS Zero Storage — Rule Curve
 — 2016 Lake Level M GSC — Average Annual Peak Lake Level



Updated 2017-11-21 10:50:56 PST

Fish species in the Cowichan Watershed	Shaw Ck	Nixon Ck	Robertson R	Sutton Ck	Cowichan Lk	Cowichan R	Somenos Lk	Quamichan Lk	Koksilah R	
Atlantic Salmon	1	1	1	1	1	1			1	
Brook Trout	1	1	1	1	1	1	1		1	
Brown Catfish (Brown Bullhead)					1	1	1	1		
Brown Trout			1		1	1	1			
Brown Trout (Anadromous)						1				
Bull Trout					1	1				
Bull Trout (Anadromous)					1					
Chinook Salmon	1	1	1		1	1			1	
Chum Salmon			1		1	1	1		1	
Coho Salmon	1	1	1	1	1	1	1	1	1	
Cutthroat Trout	1	1	1	1	1	1	1	1	1	
Cutthroat/Rainbowcross					1					
Cutthroat Trout (Anadromous)						1			1	
Westslope (Yellowstone) Cutthroat Trout		1		1						
Dolly Varden	1	1	1	1	1	1				
Kokanee					1	1				
Lake Lamprey			1		1					
Lamprey (General)					1	1				
Pacific Lamprey					1					
Western Brook Lamprey					1					
Lake Trout	1		1	1						
Prickly Sculpin					1	1		1		
Pumpkinseed Sunfish							1			
Rainbow Trout	1	1	1	1	1	1	1	1	1	
Salmon (General)			1		1					
Sculpin (General)							1			
Smallmouth Bass					1					
Steelhead	1	1	1	1	1	1	1	1	1	
Steelhead (Winter-run)									1	
Stickleback (General)							1			
Threespine Stickleback					1	1	1	1		
Unidentifiable Trout (fry <70mm)	1	1	1		1				1	
LEGEND	● Indigenous	1 Introduced/Exotic	1 No Specific Details							
BC Conservation Status	● Red	● Blue	● Yellow	Red, Blue, Yellow listed						
COSEWIC Status	1 Threatened	1 Endangered	1 Special Concern							

SIDE NOTES

Population in the Cowichan Valley

2014

Pre-contact: Cowichan Tribes state that prior to the arrival of Europeans, the Cowichan people were a large settlement. Diseases brought by the newcomers "carried away 90% our people: ... at one point only about 1000 members survived."*

1871: the first electoral census found 486 non-natives in the Cowichan area; the 1911 census reported 3864.**

1986: 54,373 people were living in the Cowichan Valley Regional District; by 2014, that had jumped to 82,690.***

1871

* <http://www.cowichantribes.com>

** North Cowichan, Bruce Hodding, 1998 (an electoral census counted only white males: a more accurate non-native head count may be 1000 in 1871, 10,000 in 1911)

*** BC Stats





Cowichan River

*Lake
Cowichan*



Maple Bay



Maple Bay Bird's Eye Cove



*View on the Cowichan River,
Duncan, B.C.*

*Canoeing with Friends
down Cowichan River*



*Fishing at Lake
Cowichan*

Work Cited

"Archive." Cowichan Valley Museum. 2017

<http://www.cowichanvalleymuseum.bc.ca/archives/index.html>

"BC Archives." Royal BC Museum. 2017

<http://search.bcaregives.gov.bc.ca/cowichan-valley-b->

[c?listPage=2&subjects=13636&limit=30&sort=alphabetic&listLimit=30](http://search.bcaregives.gov.bc.ca/cowichan-valley-b-c?listPage=2&subjects=13636&limit=30&sort=alphabetic&listLimit=30)

"Cowichan Lake Level." Cowichan Watershed Board. 2017

<http://www.cowichanwatershedboard.ca/cowichan-lake-level>

"Cowichan Lake." CVRD. 2017

<http://cvrdnewnormalcowichan.ca/cowichan-lake-graph/>

Work Cited

"The Town of Lake Cowichan." The Town of Lake Cowichan. 2017

<http://www.town.lakecowichan.bc.ca/>